

PR 
PROPERTY

23 Fieldside Road, Pulloxhill, Bedfordshire, MK45 5HN
£1,400 PCM

- Exclusive to PR Property Lettings
- Fabulous Kitchen
- Gas CH & DG Windows
- Close to great village School

- Detached House
- Large Living Room
- Ample Parking

- 2 Double Bedrooms
- Private Gardens
- Quiet Village Location

**** Exclusive to PR Property **** Located in a quiet residential close, this charming two-bedroom home offers comfortable and well-proportioned accommodation ideal for couples or small families. The property features a welcoming entrance hall, a convenient ground-floor WC, a bright living room, and a modern kitchen overlooking the rear garden. Upstairs you'll find two double bedrooms and a well-maintained bathroom. Outside, the property enjoys a private garden and off-street parking for two cars. With gas central heating and double-glazed windows throughout, this is a well-kept home ready for immediate occupation.

ENTRANCE HALL

CLOAKROOM

KITCHEN 7'8" X 10'4" (2.33M X 3.16M)

LIVING ROOM 13'4" X 15'3" (4.06M X 4.65M)

LANDING

BEDROOM 1 11'8" X 12'1" (3.56M X 3.69M)

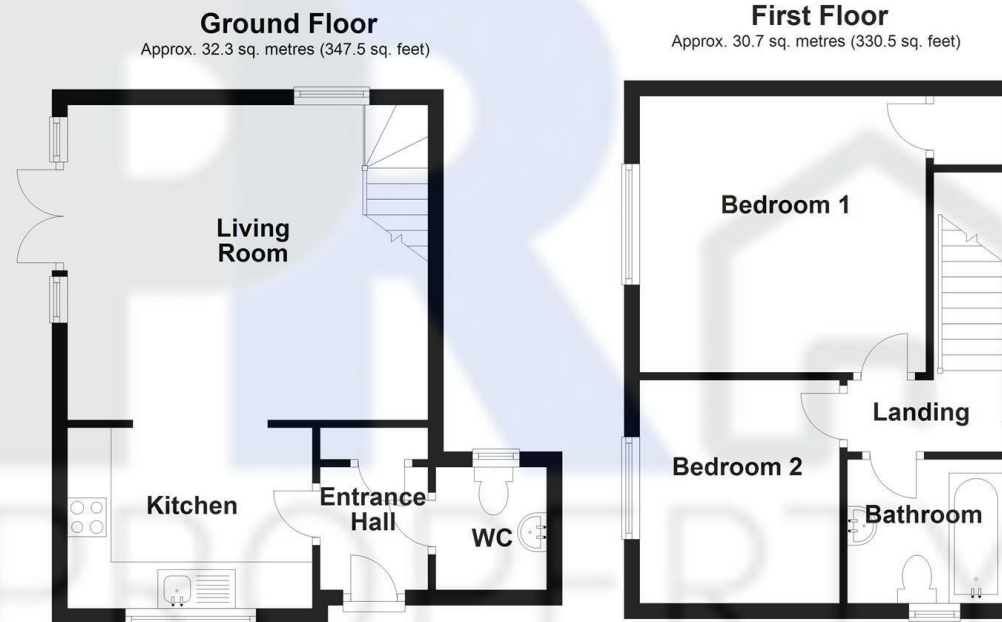
BEDROOM 2 9'5" X 8'6" (2.88M X 2.58M)

BATHROOM

OUTSIDE

GARDEN

TO FRONT



Total area: approx. 63.0 sq. metres (678.0 sq. feet)

Energy Efficiency Rating		
	Current	Potential
Very energy efficient - lower running costs		
(92 plus) A		
(81-91) B		
(69-80) C		
(55-68) D		
(39-54) E		
(21-38) F		
(1-20) G		
Not energy efficient - higher running costs		
England & Wales	82	82
EU Directive 2002/91/EC		